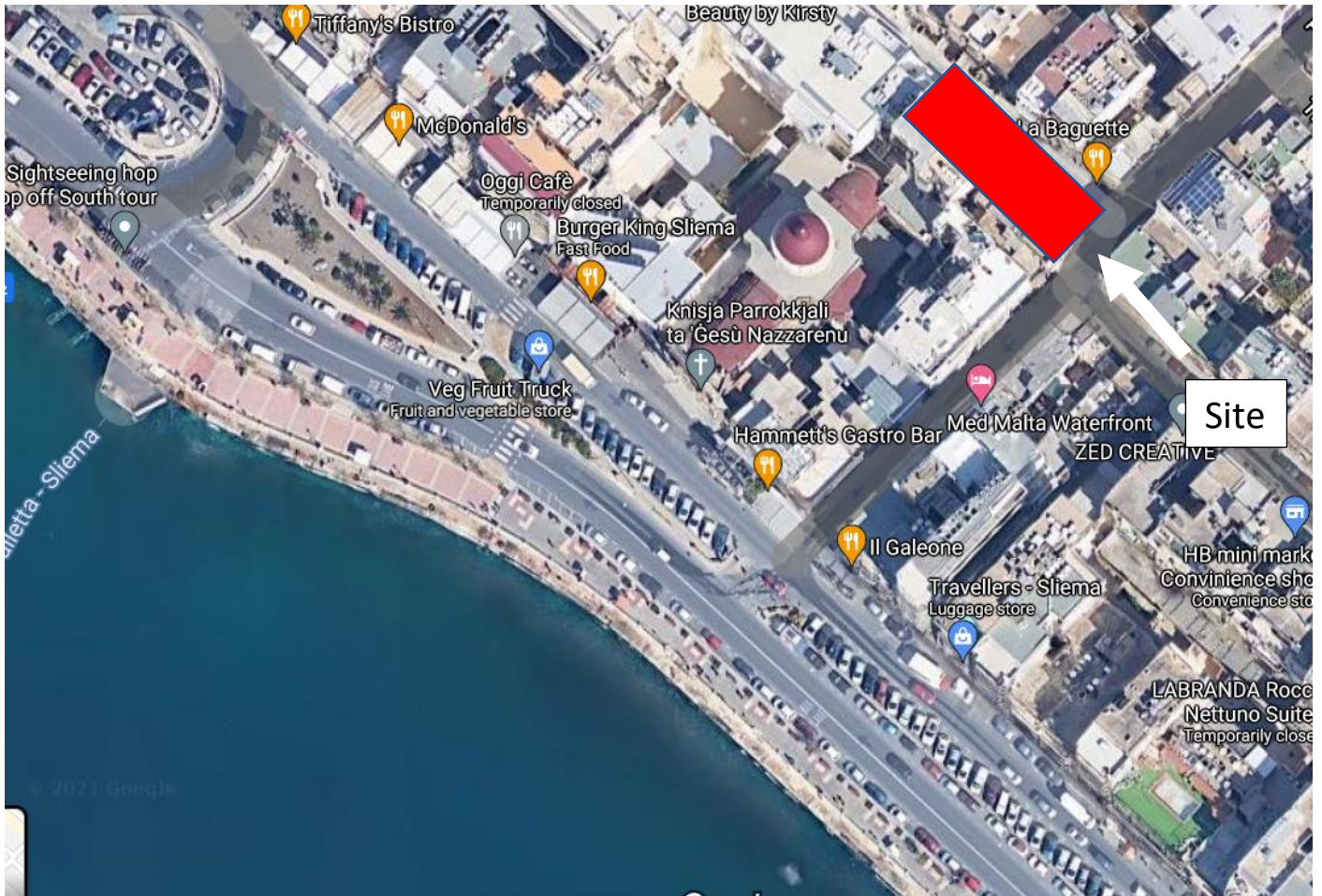


## Duplex Penthouse – Triq Zimmermann Barbaro, Sliema





## Triq Zimmermann Barbaro



### Distance to Locations:

Sea front: 80m

Sliema Ferries: 150m

The Point Shopping Centre: 550m

### Bus Routes:

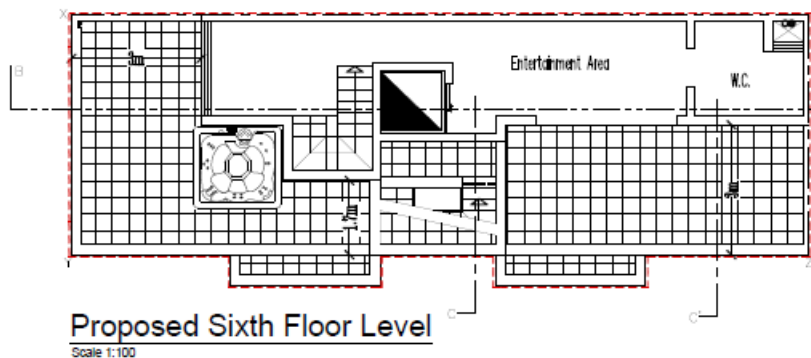
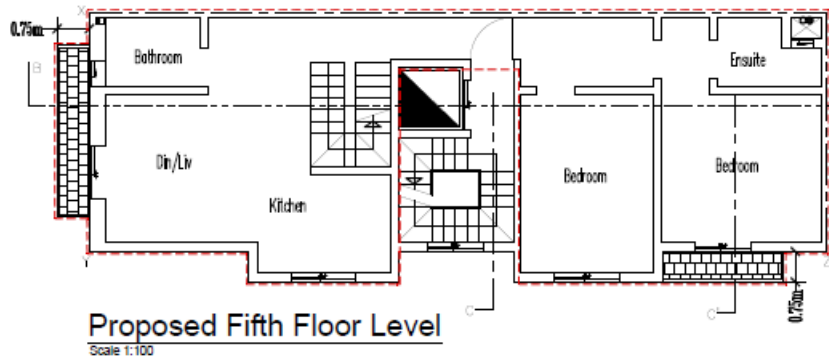
To St. Julian's: 13, 13A, 14, 16

To Valletta: 13, 13A, 14, 15, 16

To Airport: X2

To Mater Dei Hospital: 233

## Plans



**Price: €650,000**

**Internal area: 122sqm**

**External area: 50sqm**

**Total area: 172sqm**

Duplex penthouse located walking distance to the seafront and all amenities.

The penthouse boasts side views of all the Sliema harbour and Valletta. All rooms are located on the façade of the building.

Layout comprises of two bedrooms, two bathrooms (one ensuite), open plan kitchen, living and dining area leading up to a large entertainment indoor area on upper floor which includes a large outdoor space.

Penthouse to be finished exclude bathrooms and internal doors. Completion date of the project is estimated in June 2022.

## Visuals

### Proposed 5<sup>th</sup> floor





## Proposed 5<sup>th</sup> floor



## Proposed 6<sup>th</sup> floor with terrace



## Proposed 6<sup>th</sup> floor with terrace



## Proposed 6<sup>th</sup> floor with terrace





## Specification List

### Electricity

- 1 light electricity point in each room
- 4 double plugs in each bedroom, 8 double plugs in kitchen/living room
- 2 telephone points
- 2 television points
- 1 cooker unit and 1 single plug for hood
- Video hall porter intercom system
- 5 A/C points, main supply and drain
- Electrical main supply from government meter to each apartment 10mm cable complete with ELCB and MCB's
- Distribution single phase 16 module complete with MCB's
- 2 double pole 13 AMP

### Plumbing

- Water main supply with 15mm acorn pipes from government meter to storage tank and to kitchen
- 22mm acorn pipe from storage tank to bathroom
- Drainage and rain water pipes
- Floor drains in balconies and terrace

### Painting and plastering

- Gypsum internal plastering (with 2 coats of white wash water paint)

### Flooring

- Supply and installation of floors with tiles

### Railings and Apertures

- PVC double glazed apertures
- Balcony and terrace railings
- Windowsills supplied and installed with marble
- Internal staircase





## Contact Us

### Malcolm Gatt Baldacchino

Real Estate Manager

Mobile number: +356 9901 9041

Email: [mgb@unitedgroup.com.mt](mailto:mgb@unitedgroup.com.mt)